

# I-430/I-630 Interchange Improvement Project



Society of American Military Engineers  
April 11, 2012

# Background



# Before Construction



2010 ADTs

Aerial Photo: 4/19/2007



# Project Development

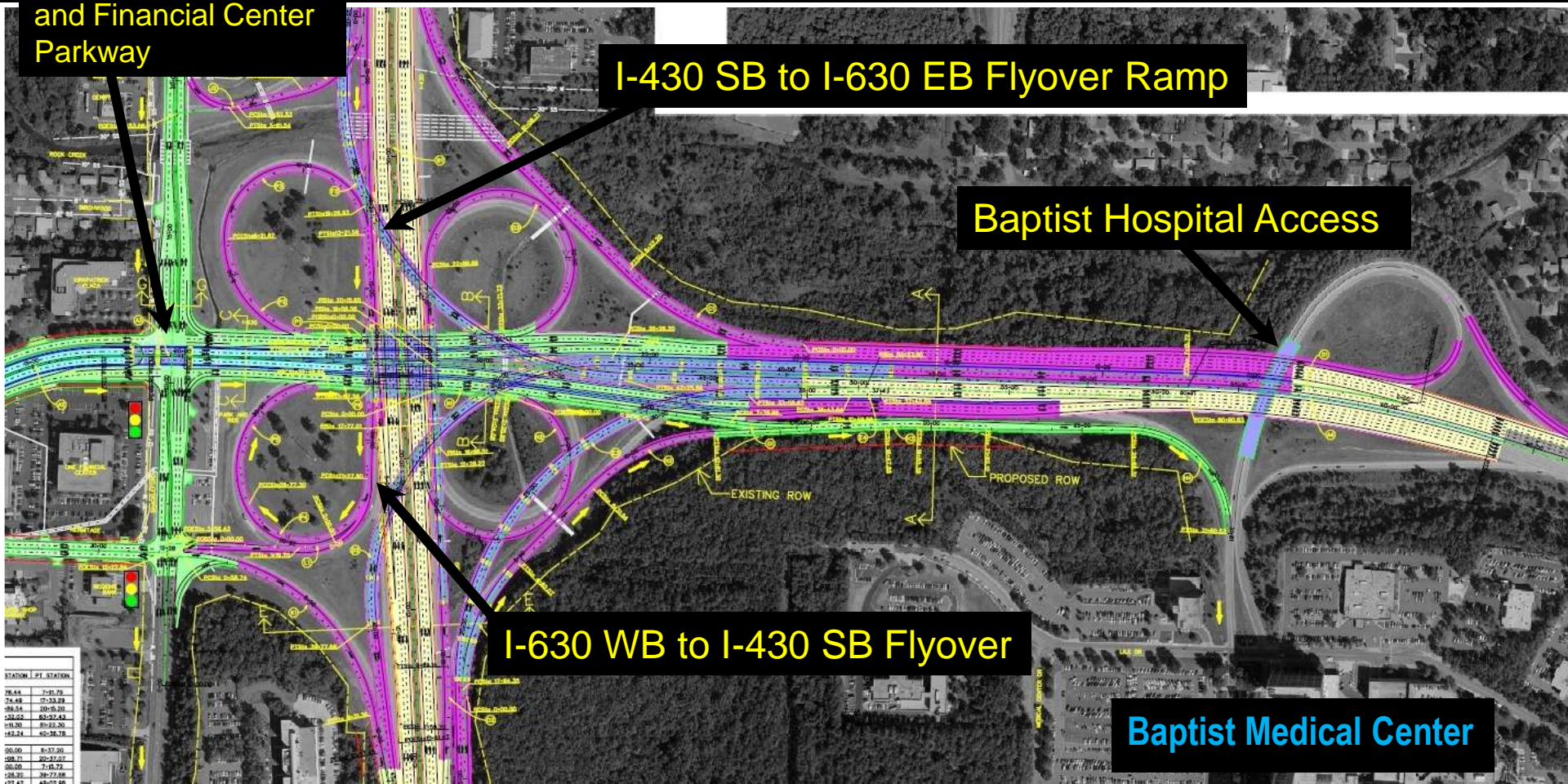
Grade Separation at Shackleford Road and Financial Center Parkway

I-430 SB to I-630 EB Flyover Ramp

Baptist Hospital Access

I-630 WB to I-430 SB Flyover

Baptist Medical Center





# Conceptual Design



# Aesthetic Enhancement



# Maintenance of Traffic







# I-430 Bridges



# Shackleford Road Overpass



# Approximately 200,000 SY Concrete Pavement



# 7.6 Million Pounds of Roadway Reinforcing Steel



# Flyover Ramps

**I-430 SB to I-630 EB Flyover**

**I-630 WB to I-430 SB Flyover**

**I-430 NB to I-630 EB Flyover**



# Under Construction



# NE Ramp Excavation











# Baptist Health Drive Hospital Access



# South Abutment



# Median Pier & North Abutment



# Financial Centre



# Project Summary

- Total Cost: \$125,084,445
- 3 “Lane” Miles of Bridges
- 81,500 Cubic Yards of Concrete
- 420 Miles of Sidewalk
- Houston, Texas
- 12 Million Pounds of Rebar
- 1570 Miles of Rebar
- Montreal, Canada



# An Award Winning Project

